

## How to install a root certificate in Windows XP

### INTRODUCTION

A root certificate is either a public key certificate or a self-signed certificate that identifies the Root Certificate Authority (CA).

If installing the SecureW2 EapSuite for the eduroam network UCD recommends using the installation package found at [http://eduroam.ucd.ie/UCD\\_SecureW2\\_v0.03.exe](http://eduroam.ucd.ie/UCD_SecureW2_v0.03.exe)

The installation package will import the UCD root certificate automatically.

### INSTRUCTIONS

To install a trusted root certificate manually follow the steps below.

#### How to install a Trusted Root Certificate in Windows XP

1. Go to Start – Control Panel



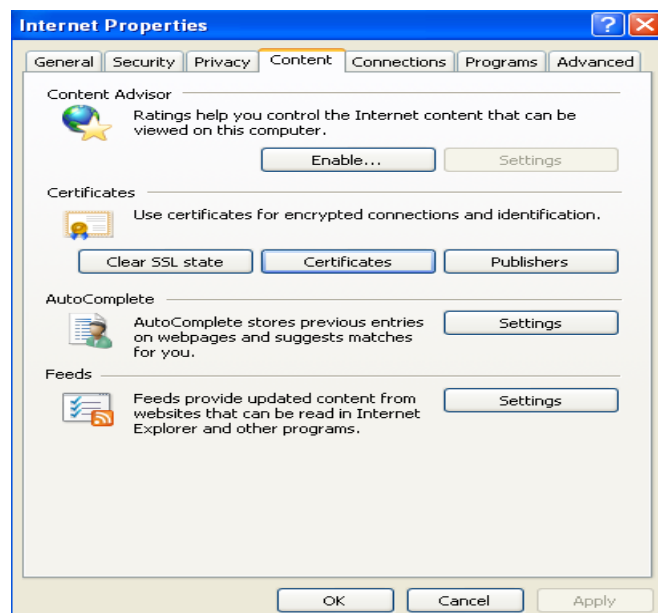
and click on

**Internet Options**



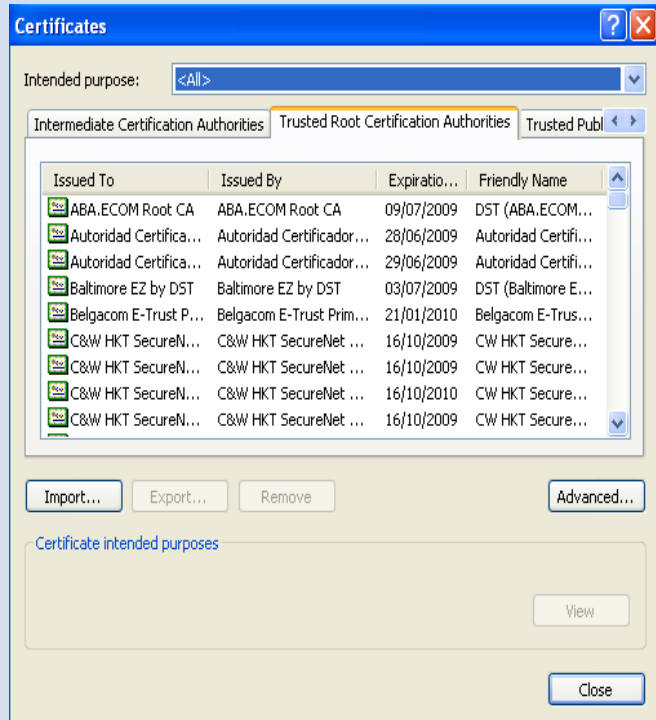
2. Click on the **Content** tab

Click **Certificates**



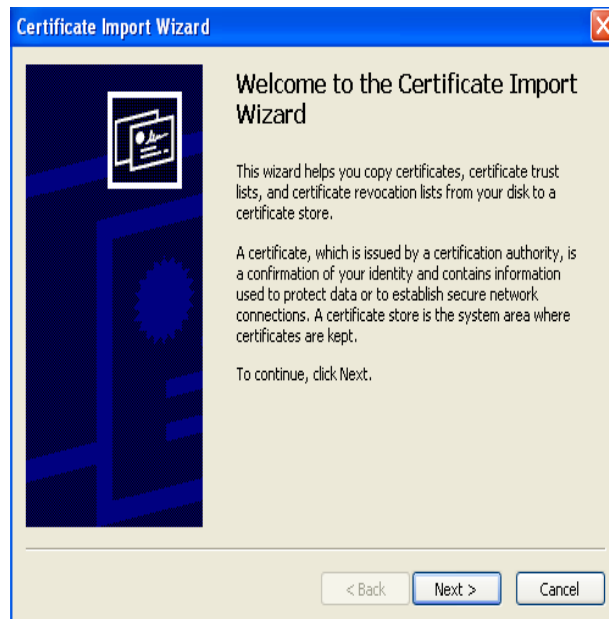
- 3 Select **Trusted Root Certification Authorities** to see a list of trusted certificates.

Click **import** to install UCD Trusted Root Certificate.



- 4 The Certificate Import wizard appears

Click **Next** to get started

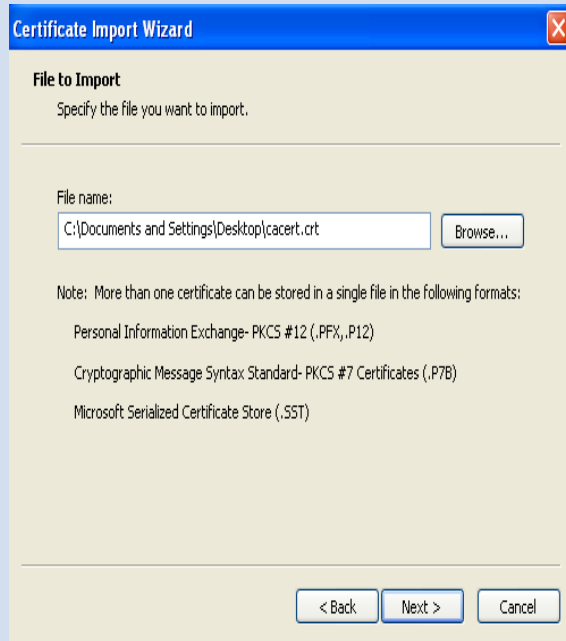


- 5 Click **Browse** to locate the UCD Trusted Root Certificate.

The CA certificate cacert.crt can be found at:

<http://www.ucd.ie/system/ssl/cacert.crt>

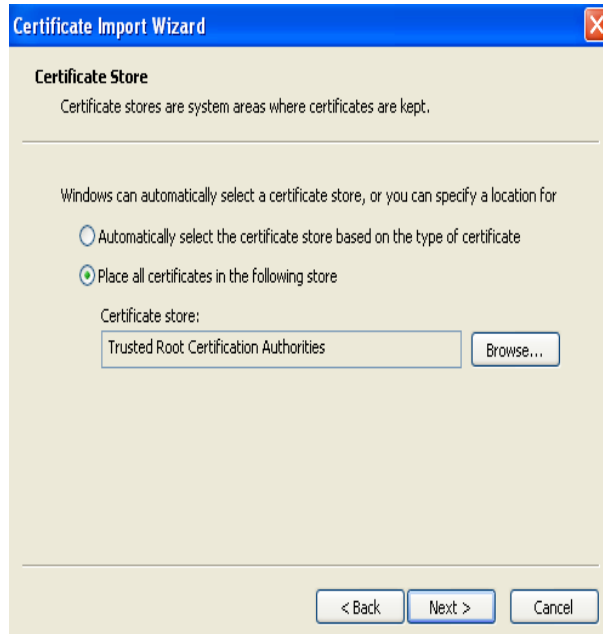
Save this file to your computer.



Click **Next**

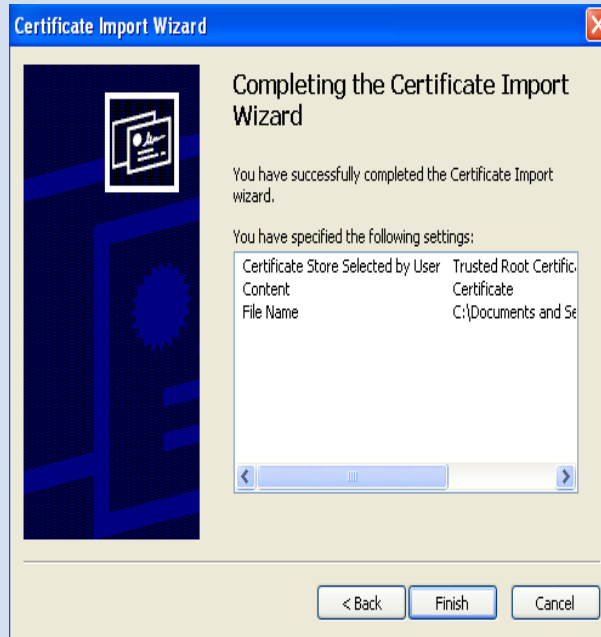
- 6 Make sure the

**Place all certificates in the following store** button is selected.



Click **Next**

- 7 Click **Finish** to exit the wizard



- 8 If the certificate installed successfully the following message box should appear.

